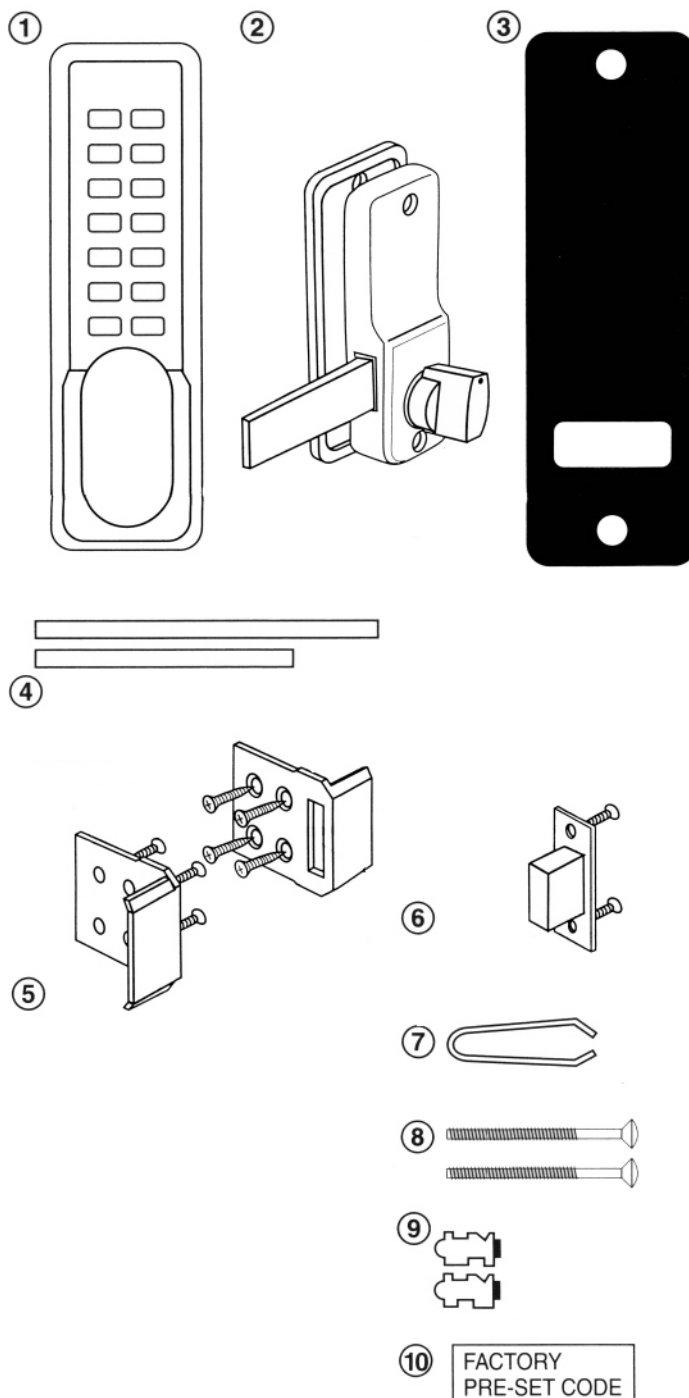


Parts List, Installation and General Information

BL2005

Parts List

Please make sure you have received all the following parts:



(1) Keypad

(2) Inside Handle

(3) Neoprene seals x2

(4) Spindles (Only one is used)

(5) Surface lock keep

(6) Morticed lock keep

(7) Tweezers (For code changing)

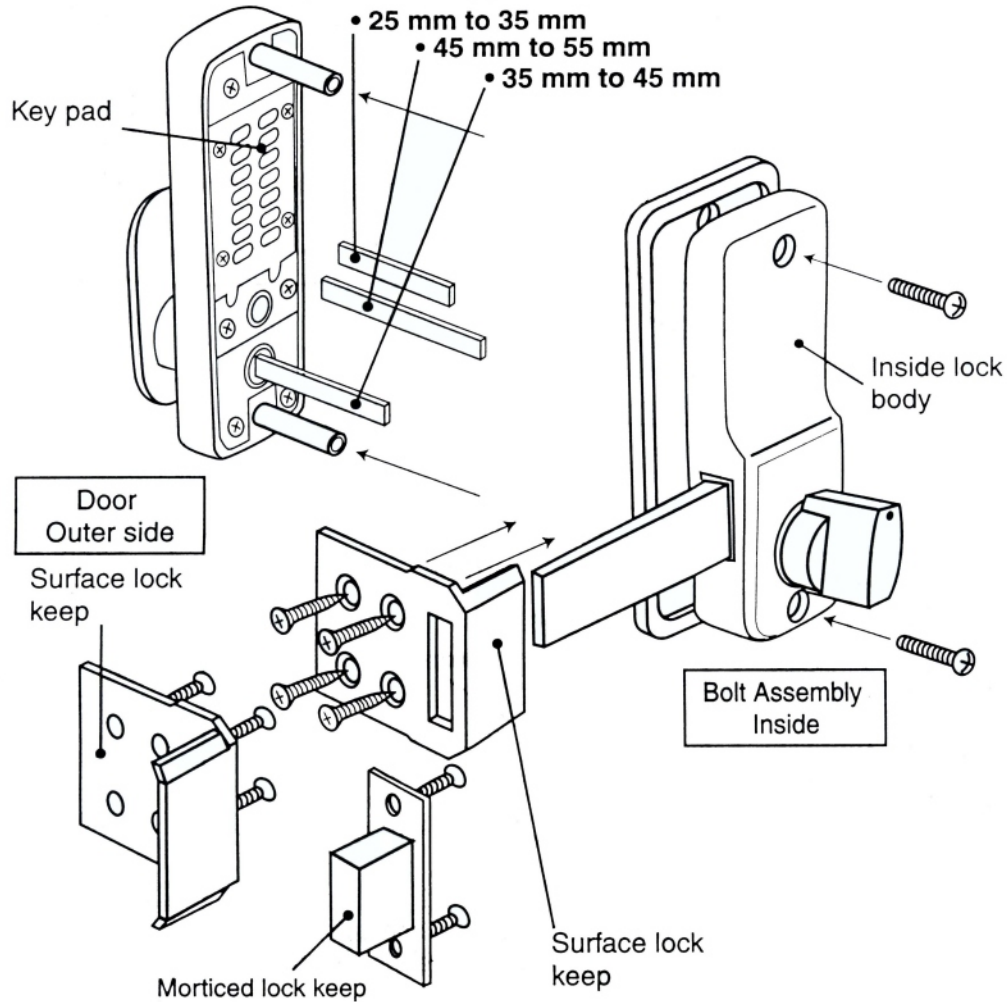
(8) Fixing bolts. 4 Supplied

(9) Spare tumblers. 2 x Coded
2 x Uncoded

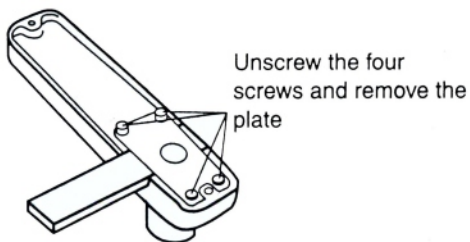
(10) Code card

Assembling and Fitting

Three flat spindles are supplied to suit different door thickness' 25 mm to 55 mm



- ① Lay the keypad on a table as shown on drawing below.



- ② Turn the bolt handle towards the left.

Turn over the bolt as shown in the drawing below and replace the plate and screws removed earlier

